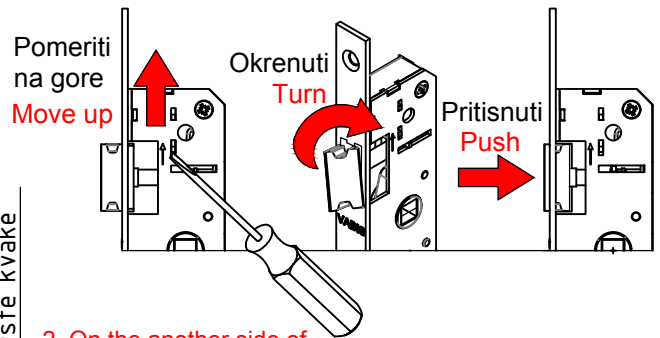


Uputstvo za ugradnju brava i okretanje jezička
 Manual for door locks installation and latch turn

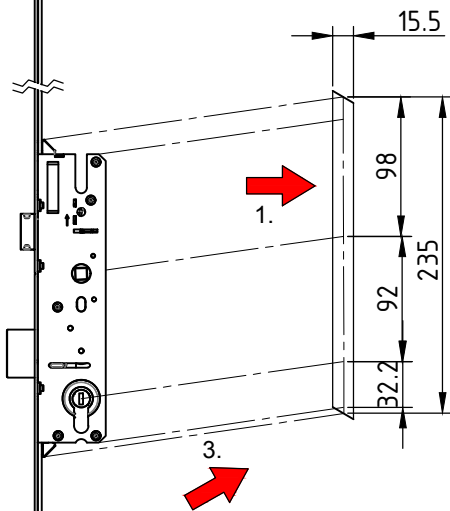
Brave koje dobijate u kutiji su univerzalne, mogu se koristiti i za leva i za desna vrata. U zavisnosti od toga šta je potrebno brave možete okretati na sledeći način:

Door locks you get in the box are universal. You can use it for left and right doors. Depend on the side you need, it is possible to change latch orientation like on the picture below:



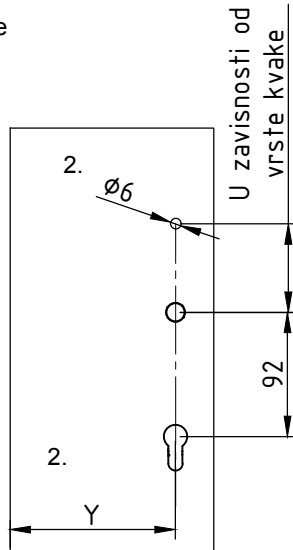
1. Make hole in the PVC profile where the lock will be placed

1. Napraviti otvor u PVC profilu u koji ćete kasnije namontirati bravu



3. Bravu postaviti u otvoru koji je napravljen na profilu

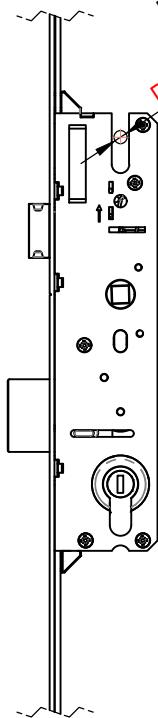
3. Place door lock in the hole you make in the profile



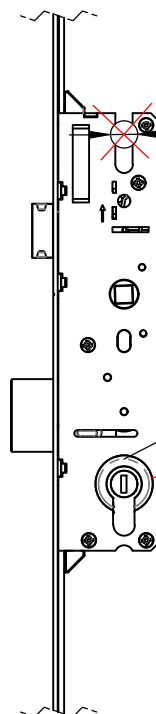
2. On the another side of the profile make the holes on dimension x and y depend on door lock width Y

2. Na bočnoj strani profila napraviti naznačene otvore koji se rade u zavisnosti od širine brave Y

Prerez za vijak od štita
 busiti burgijom $\phi 6$
 Drill with drill tool dimension $\phi 6$



Zabranjeno je busenje kucista brave!!!
 Bušiti dok brava nije postavljena u profil
 Please do not drill door lock housing!!!
 Drill without door lock installed in profile



4. Plastični cilindar se skida tek nakon ugradnje

4. Plastic cylinder put out after complete door lock installation